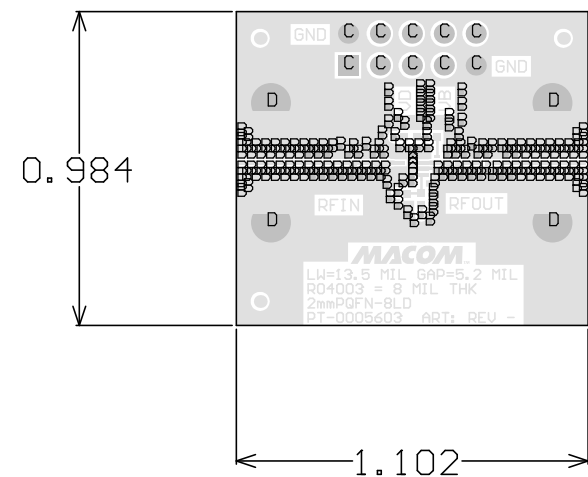
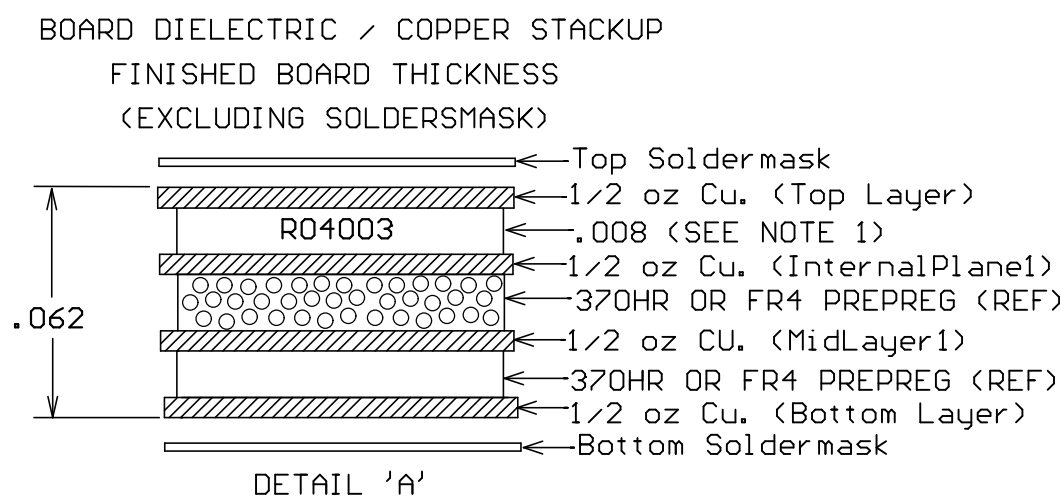


REVISIONS	
REV	DESCRIPTION
-	INITIAL RELEASE PER CO-010293

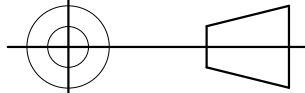
Symbol	Hit Count	FHS	Tolerance	Plated	Hole Type
A	3	8.00mil	Filled (See Note 4)	PTH	Round
B	173	10.00mil	+3mil/Plated Shut	PTH	Round
C	10	39.00mil	+/- 3mil	PTH	Round
D	4	85.00mil	+/- 3mil	PTH	Round
	190 Total				



NOTES:

1. MATERIAL:
R04003, Er+3.55 HEIGHT=8 MIL.
INNER LAYERS MAY USE 370HR OR FR4 DIELECTRIC.
COPPER ON TOP AND BOTTOM IS TO BE PLATED UP TO 1 OZ COPPER AND INTERNAL LAYERS PER DETAIL 'A'.
MATERIAL STACKUP, THICKNESS, AND STARTING COPPER FOIL PER DETAIL 'A'.
 2. FINISH: GOLD PLATE OVER NICKEL.
GOLD: PLATE PER MIL-G-45204C, TYPE III, GRADE A, CLASS 0, 30 MICROINCHES MIN.
NICKEL; SULFAMATE PER QQ-N-290, 75 MICROINCHES +/- 10%..
THERE SHALL BE NO PITS, PIN HOLES OR NODULES WITHIN EXPOSED
METAL AREAS. STACKUP REPRESENTS FINISH THICKNESS.
 3. PCB SHALL CONFORM TO IPC-A-600 CLASS 2.
 4. ALL 8 MIL FHS (3) ARE FILLED WITH DUPONT CB100 SILVER
EPOXY AFTER COPPER PLATING.
 5. ALL HOLES TO BE PLATED THRU UNLESS OTHERWISE SPECIFIED.
 6. MINIMUM LINE WIDTH AND SPACING IS .005, LINE WIDTHS ARE +/-1.5MILS.
 7. ELECTRONIC DATA IS EQUAL TO THE FINISHED LINE WIDTH.
 8. ALL HOLE SIZES APPLY AFTER PLATING.
 9. COPPER PLATING IN THROUGH HOLES WILL BE .001 MINIMUM AVERAGE WITH AN
ABSOLUTE MINIMUM OF .0008.
 10. DIMENSIONS SHOWN ARE FOR LOCATION OF 0,0 FOR THE DRILL FILE.
 11. GROUND PLANE ON ALL LAYERS MUST EXTEND TO EDGE OF BOARD UNLESS OTHERWISE NOTED.
 12. LPI SOLDER MASK COATING SHALL CONFORM TO IPC-SM-840, CLASS 2.
 13. GROUNDED COPLANAR LINES ON LAYER 1 ARE CONTROLLED IMPEDANCE. A 13.5 MIL LINE
WIDTH A 5.2 MIL SPACE SHALL BE 50 OHMS +/- 5% WITH REFERENCE TO THE GROUND
PLANE WITH A DISTANCE OF 8 MILS FROM LAYER 2.
 14. ALL MATERIALS DESCRIBED IN THIS DOCUMENT/DRAWING SHALL BE IN COMPLIANCE WITH AND
CONTAIN NO SUBSTANCES RESRICTED OR REQUIRING SPECIAL RECLAMATION UNDER
THE LATEST RoHS, WEEE OR ELV DIRECTIVES.
- | |
|-----------|
| |
| X |
| NEXT ASSY |

X	MAAL-011078
NEXT ASSY	USED ON
APPLICATION	

<div>UNLESS OTHERWISE SPECIFIED INTERPRET DRAWING PER ASME Y14.5 DO NOT SCALE THIS DRAWING</div> <div>NOTE: THIS DRW INCORPORATES THIRD ANGLE PROJECTION</div> <div></div> <div>M/A-COM Technology Solutions, INC. CONFIDENTIAL INFORMATION SUBJECT TO NDA</div> <div>The information contained in this document or material is the valuable and confidential property of M/A-COM Technology Solutions Holdings, Inc. and/or its subsidiaries or affiliates (collectively "MACOM"), provided to you subject to a non-disclosure agreement between you and MACOM solely for use in supporting MACOM's business as and to the extent MACOM authorizes in writing from time to time. This information shall be held in strictest confidence and shall not be reproduced, published, disclosed to others, or used for any purpose except as and to the extent specifically authorized by MACOM in a separate written agreement. If permission is granted for reproduction, this legend must be included in any and all copies. This document or material shall be promptly returned to MACOM or destroyed upon request, completion of the use for which it was made available to recipient, or termination of MACOM's relationship with recipient, whichever first occurs.</div>	<div>UNLESS OTHERWISE SPECIFIED DIMENSIONS ARE IN INCHES</div> <div>TOLERANCES ON</div> <table><thead><tr><th>DECIMALS</th><th>ANGLES</th></tr></thead><tbody><tr><td><div><div>• X ± .1</div><div>• XX ± .02</div><div>• XXX ± .005</div><div>• XXXX ± .0005</div></div></td><td><div>± 0.5°</div></td></tr></tbody></table> <div>UNLESS OTHERWISE SPECIFIED <div><div>3</div><div>32</div></div> ALL OVER</div> <div>MATERIAL</div> <div>SEE NOTE 1</div> <div>FINISH</div> <div>SEE NOTE 2</div>	DECIMALS	ANGLES	<div><div>• X ± .1</div><div>• XX ± .02</div><div>• XXX ± .005</div><div>• XXXX ± .0005</div></div>	<div>± 0.5°</div>	<div><div><div>MACOM</div><div>TM</div></div><div>MACOM Technology Solutions, Inc. 100 Chelmsford Street Lowell, MA 01851</div></div> <div>TITLE</div> <div>FABRICATION, AMPLIFIER</div> <div>SMB, 2mmPDFN-8LD</div> <table><tr><td>SIZE</td><td>CAGE CODE</td><td>DRAWING NO.</td><td colspan="2"></td></tr><tr><td>B</td><td>55NN2</td><td>PT-0005603</td><td colspan="2"></td></tr><tr><td>SCALE:</td><td>1:1</td><td>WEIGHT</td><td>/</td><td>SHEET 1 OF 1</td></tr></table>				SIZE	CAGE CODE	DRAWING NO.			B	55NN2	PT-0005603			SCALE:	1:1	WEIGHT	/	SHEET 1 OF 1
DECIMALS	ANGLES																							
<div><div>• X ± .1</div><div>• XX ± .02</div><div>• XXX ± .005</div><div>• XXXX ± .0005</div></div>	<div>± 0.5°</div>																							
SIZE	CAGE CODE	DRAWING NO.																						
B	55NN2	PT-0005603																						
SCALE:	1:1	WEIGHT	/	SHEET 1 OF 1																				